

MIRADA

BY COACHMEN



DON'T SETTLE FOR MIDDLE-OF-THE-ROAD.

MIRADA IS FOR MOTORHOME ENTHUSIASTS WHO APPRECIATE THE FINER ASPECTS OF HIGHWAY LIFE — AT A SURPRISINGLY AFFORDABLE PRICE.



Entertaining is a breeze with a beautifully appointed kitchen. The exterior kitchen (available in select floor plans) and outdoor entertainment system are perfect for taking the party outside.

There's even room for the kids to sleep over with the drop-down cabover bunk.



INTERIOR WOOD COLOR SELECTIONS



White Velvet



Chocolate Cherry

INTERIOR DÉCOR COLOR SELECTIONS



Carnegie

Heron



Photography features the
Mirada 350S floorplan.



Equipped with a comfortable king mattress and designer headboard with coordinating bedspread and shams, Mirada's bedroom is the perfect place to sleep after a day in the woods or on the town.

The bedroom features a 32" LED TV, spacious wardrobe and side tables to keep clutter at bay.

The Coach-Pap™ Station allows for storage of CPAP machines and other electronics, located in the cabinet above the bed.

Built from stainless steel and porcelain, the bathroom is both appealingly designed and super-easy to clean.



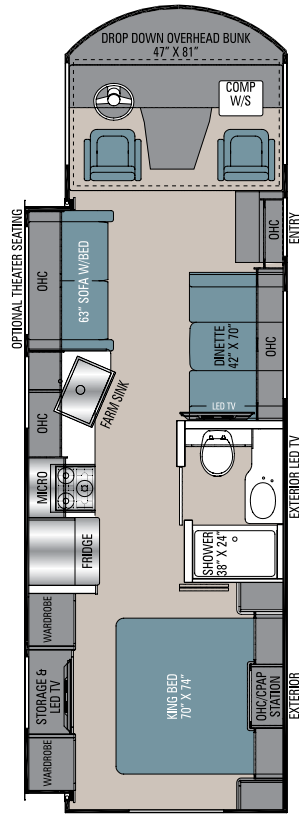
You'll find hardwood cabinet doors in the galley and living areas, providing an elegant feel in the Mirada.

The Mirada is equipped with optional power theater seating that has heat, massage, light and recline functions.

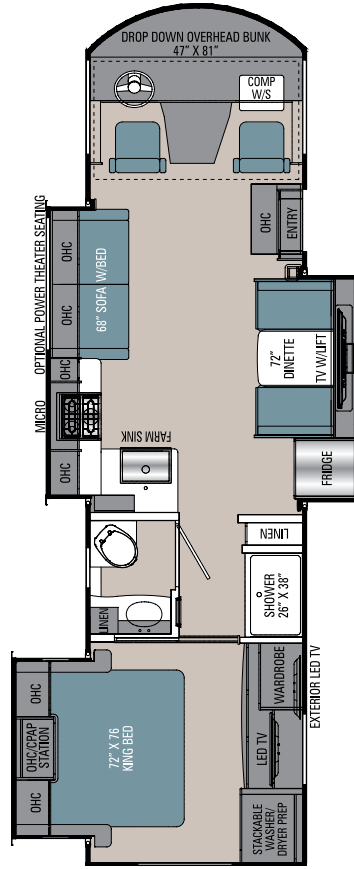
Convert the sofa into a bed to provide even more sleeping capacity.

FLOORPLANS

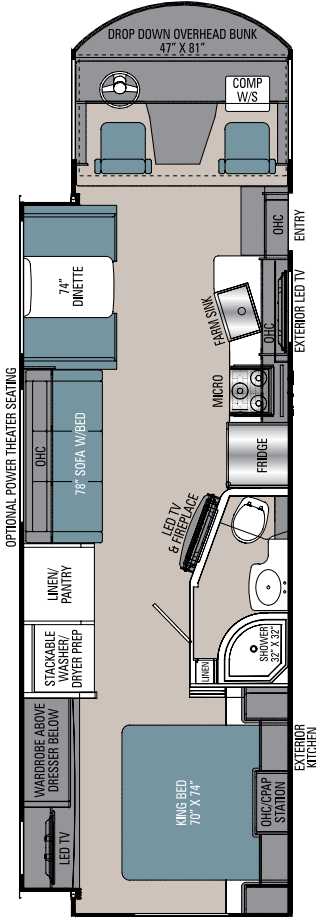
Mirada includes five floorplan options, so you'll have no trouble choosing the one that suits you perfectly.



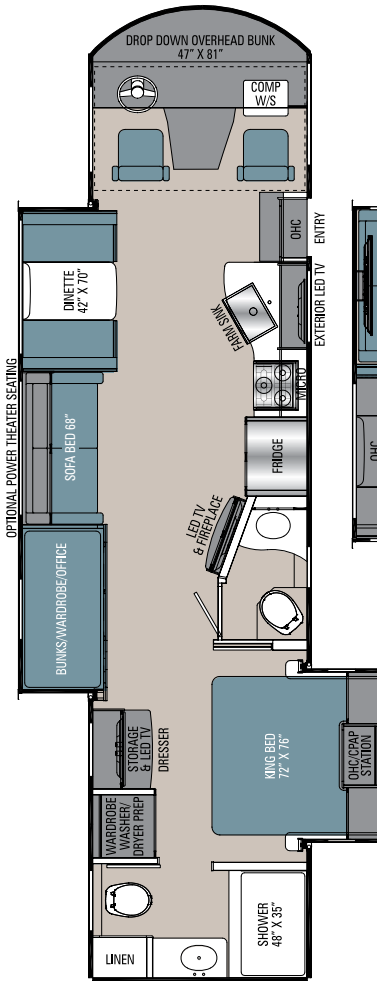
29FW



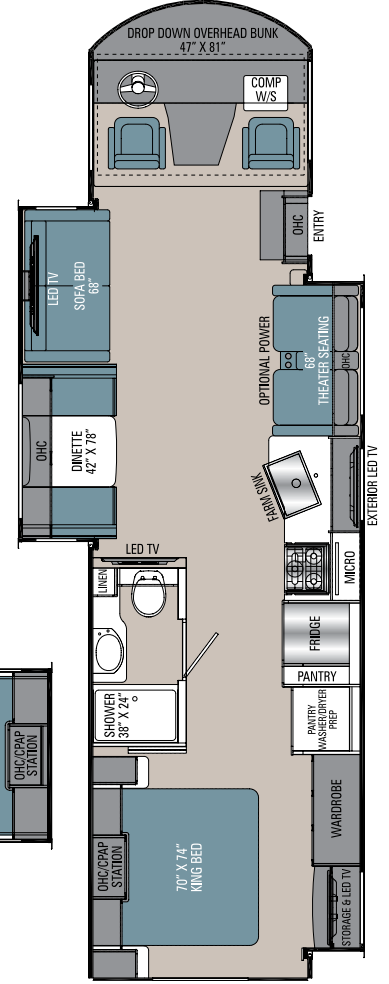
315KS



32LS



35ES



35OS

MIRAD SPECIFICATIONS

| CLASS A GAS | 29FW | 315KS | 32LS | 35ES | 35OS |
|------------------------------|----------------|----------------|----------------|----------------|----------------|
| FORD ENGINE V-8 7.3L 3-VALVE | 350 HP/468 TRQ | 350 HP/468 TRQ | 350 HP/468 TRQ | 350 HP/468 TRQ | 350 HP/468 TRQ |
| WHEEL BASE | 190" | 228" | 228" | 242" | 242" |
| GVWR | 18,000 lbs | 22,000 lbs | 20,500 lbs | 22,000 lbs | 22,000 lbs |
| GCWR | 23,000 lbs | 26,000 lbs | 26,000 lbs | 26,000 lbs | 26,000 lbs |
| GAWR FRONT | 7,000 lbs | 8,000 lbs | 7,500 lbs | 8,000 lbs | 8,000 lbs |
| GAWR REAR | 12,000 lbs | 15,000 lbs | 13,500 lbs | 15,000 lbs | 15,000 lbs |
| FUEL CAPACITY | 80 gal | 80 gal | 80 gal | 80 gal | 80 gal |
| LP GAS CAPACITY | 20 gal | 20 gal | 20 gal | 20 gal | 20 gal |
| FURNACE (BTUs) | 30,000 | 30,000 | 30,000 | 30,000 | 30,000 |
| EXTERIOR LENGTH (w/o Ladder) | 30' 7" | 33' 1" | 34' 10" | 36' 10" | 36' 10" |
| EXTERIOR HEIGHT (w/A/C) | 12' 5" | 12' 7" | 12' 5" | 12' 5" | 12' 5" |
| EXTERIOR WIDTH | 102" | 102" | 102" | 102" | 102" |
| FRESH WATER | 50 gal | 70 gal | 70 gal | 70 gal | 70 gal |
| GREY WATER | 46 gal | 46 gal | 45 gal | 45/45 gal | 45 gal |
| BLACK WATER | 46 gal | 46 gal | 45 gal | 45/46 gal | 45 gal |
| WATER HEATER | 6 gal | 10 gal | 6 gal | 6 gal | 6 gal |
| AWNING SIZE | 20' | 8' & 12' | 15' & 10' | 17' | 20' |

GVWR (Gross Vehicle Weight Rating) is the maximum permissible weight of the unit when fully loaded. It includes all weights, inclusive of all fluids, occupants, cargo, optional equipment and accessories. For safety and product performance do NOT exceed the GVWR.

GCWR (Gross Combined Weight Rating) is the maximum permissible loaded weight of your motor home and any towed trailer or towed vehicle. Actual GCWR of this vehicle may be limited by the sum of the GVWR and the installed hitch receiver maximum capacity rating; see hitch rating label for detail.

GAWR (Gross Axle Weight Rating) is the maximum permissible weight, including cargo, fluids, optional equipment and accessories that can be safely supported by each axle.

UVW (Unloaded Vehicle Weight) * is the typical weight of the unit as manufactured at the factory. It includes all weight at the unit's axle(s), including full fuel, all fluids and LP Gas. The UVW does not include cargo, fresh potable water, additional optional equipment or dealer installed accessories.

*Estimated Average based on standard build optional equipment.

CCC (Cargo Carrying Capacity) ** is the amount of weight available for fresh potable water, cargo, passengers, additional optional equipment and accessories. CCC is equal to GVWR minus UVW. Available CCC should accommodate fresh potable water (8.3 lbs per gallon). Before filling the fresh water tank, empty the black and gray tanks to provide for more cargo capacity.

** Estimated average based on standard build optional equipment

Each Coachmen motorhome is weighed at the manufacturing facility prior to shipping. A label identifying the unloaded vehicle weight of the actual unit and the cargo carrying capacity is applied to every Coachmen motorhome prior to leaving our facilities.

The load capacity of your unit is designated by weight, not by volume, so you cannot necessarily use all available space when loading your unit.

Actual towing capacity is dependent upon your particular loading and towing circumstances, which includes the GVWR, GAWR and GCWR as well as adequate trailer brakes. Please refer to the Operator's Manual of your vehicle for further towing information.

All information contained in this brochure is believed to be accurate at the time of publication. However, during the model year, it may be necessary to make revisions and Coachmen reserves the right to make all such changes without notice, including prices, colors, materials, equipment and specifications as well as the addition of new models and the discontinuance of models shown in this brochure. Therefore, please consult with your Coachmen dealer and confirm the existence of any materials, design or specifications that are material to your purchase decision. 2/21

©Copyright 2021 Coachmen RV a Division of Forest River Inc. – All Rights Reserved.

STANDARD FEATURES

INTERIOR APPOINTMENTS

Solid Surface Kitchen Countertop
Premium Linoleum Throughout
Brushed Nickel Hardware
Hardwood Cabinet Doors/Flat Panel
Self-Closing Ball Bearing Drawer Guides
Throughout
Frameless Tinted Windows with Safety Glass
Reclining/Swivel Pilot Seats
Sofa with Hide-A-Bed (Where Applicable)
Solar Privacy Shades Throughout
Easy Clean Cockpit Floor
Power Windshield Shade with Manual Side Shade

INTERIOR EQUIPMENT

10" Touch Screen Radio AM/FM Radio
with Bluetooth Apple CarPlay and Android
Auto Link Enabled
Pre-Wired for Satellite Dish
Exterior Cable TV Jack and Tailgater Satellite Jack
LP Leak Alarm and Smoke Detector
Carbon Monoxide Detector
Fire Extinguisher
King Jack TV - Radio Antenna
40" LCD TV Main Coach (29FW, 32LS, 35ES)
50" LCD TV Main Coach (35OS, 315KS)
Fireplace Electric (32LS, 35ES)
Charging Station for Electronic Devices

GALLEY

High Rise Kitchen Faucet
Stainless Steel Farmhouse Sink
Solid Surface Sink Covers
Stainless Residential Refrigerator
(32LS, 35ES, 35OS, 315KS)
Stainless Steel, Large Double Door Refrigerator
12 Volt (29FW)
Stainless Steel 3-Burner Range with Glass Cover
Stainless OTR Microwave
Tile Backsplash

BATH AND WATER

Stainless Lavatory Sink
Porcelain Toilet with Foot Flush
One Piece ABS Shower Surround
Glass Shower Door
Power Bath Vent
6-Gallon Gas/Electric D.S.I. Water Heater
Demand Water Pump
Skylight Over Shower
Stackable Washer/Dryer Prep
(32LS, 35OS, 35ES, 315KS)
Whole Coach Water Filter (Exc. CSA)

SLEEPING

King Bed
CPAP Cabinet
Designer Headboard
32" LCD TV Bedroom
Power Drop-Down Front Bunk Bed
Bunk-Office-Wardrobe Room (35ES Only)

ELECTRICAL/HEATING/AC

LED Interior Lighting
30'-50-Amp Power Cord
55-Amp, 110/12-Volt Power Converter
GFI Circuit
Outside Receptacle (DS)
Emergency Start Switch
Lighted Trunk Boxes
Exterior LED Strip Light
30,000 BTU E.I. Furnace
Dual 15,000 BTU A/C with Heat Pump
Dual Coach Batteries
5.5 Onan Generator
Coach Command Center
Automatic Transfer Switch
1200W Inverter (32LS, 315KS, 35ES, 35OS)
Auto Generator Start (32LS, 315KS, 35ES, 35OS)
100W Solar Panel with Controller
(Aftermarket Upgradeable to 265W)

AUTOMOTIVE/EXTERIOR

Ford F53 Chassis 7.3L V8
Tilt and Telescoping Steering Wheel
Cruise Control
Traction Control
Sunload Sensor with Auto Dimming
Dash Lighting
Intermittent Wipers
Dash Air Conditioning
19.5 Radial Tires (N/A 315KS)
22.5 Radial Tires with Aluminum Rims
(315KS Only)
Rear Mud Flaps Only
Power Entrance Step-Double
Full Basement with Pass Thru Storage
Radius Trunk Doors with Slam Latch
Fiberglass Front Cap and Rear Cap
Dead Bolt Lock-Entrance Door
26" Radius Entry Door
Power Patio Awning with Speakers
5,000 Towing Hitch with 7-Way Plug (29FW)
8,000 Towing Hitch with 7-Way Plug
(32LS, 35OS, 35ES, 315KS)
High Definition Back Up and Side Cameras
Rear Mounted Roof Ladder
Power Heated Mirrors
Automatic Leveling Jacks
Slide-Out Room Awning(s)
20-Gallon LP Tank
Valve Stem Extenders
Exterior Kitchen (29FW, 32LS)
Computer Work Station at Passenger Seat
High Gloss "Oyster" Gelcoat Sidewalls
(with Azdel™ Superlite Composite)
Crowned, Laminated Fiberglass Roof
(with Azdel™ Superlite Composite)
Exterior Propane Hook-Up
Outside Entertainment Center with TV
Exterior Bluetooth - TV Audio Speakers
Auxiliary Dash Fans
Auxiliary Driving Lights

OPTIONAL FEATURES

INTERIOR COLOR SELECTIONS

Carnegie
Heron

INTERIOR WOOD COLOR SELECTIONS

White Velvet
Chocolate Cherry

EXTERIOR COLOR SELECTIONS

Full Body Paint

- Phantom
- Shadow
- Ghost
- Cullinan

OPTIONAL FEATURES

Power Theater Seating (N/A 29FW)
Manual Theater Seating (29FW)
Washer/Dryer Stackable
(32LS, 35OS, 35ES, 315KS)
6-Way Power Driver Seat
Diamond Shield Paint Protection -
(Required with Full Paint)
CSA Up-fit
CD-MVSA (Canadian Motor Vehicle Safety Act)¹

Notes:

¹ Mandatory For All Canadian Provinces

EXTERIOR COLOR OPTIONS



Partial Paint



Full Body Paint - Phantom



Full Body Paint - Shadow



Full Body Paint - Ghost



Full Body Paint - Cullinan



CUSTOMER SATISFACTION

www.ForestRiverBuyLocal.com



SCAN HERE

To see available Standards, Options and Features!



Coachmen RV, a Division of Forest River, Inc.,
A Berkshire Hathaway Company

423 N. Main St., P.O. Box 30, Middlebury, IN 46540

To learn more about Coachmen RV and our products and see how Coachmen is making the easy life easier, visit www.coachmenrv.com



**24/7 EMERGENCY
ROADSIDE ASSISTANCE
WITH VEHICLE PURCHASE***

| | |
|----------------|-----------------|
| TOWING | WINCH-OUT |
| JUMP-STARTS | MOBILE MECHANIC |
| TIRE CHANGES | TECHNICAL |
| FLUID DELIVERY | SUPPORT |
| LOCKOUT | DEALER LOCATOR |
| SERVICE | SERVICES |



*VALID FOR 1 YEAR FROM DATE OF PURCHASE



Learn More
Scan this barcode using a QR Reader on your smart phone to learn more about Forest River.



A Berkshire Hathaway company.